

SCERS NEWSLETTER

RETIREMENT INFORMATION

What's inside

- Employer Spotlight: Department of Agriculture, Weights and Measures
- Annual Statements Now Available via Member Portal
- Don't Miss Emails From SCERS
- Investment Update

A Message from SCERS' CEO

As SCERS heads toward its 100th anniversary in 2041, we are beginning to build a blueprint that will help us make the best decisions possible on your behalf.

Even as 2041 may seem like a long way off, we are taking a proactive approach to ensure that we are providing a strong foundation for the next generation of public employees.

Our success over the past 84 years wouldn't have been possible without a great deal of planning. And because we aim to be here for many decades to come, we're not only asking for members' feedback, we're also reaching out to our Board, staff, employers, and experts to help us fully understand potential changes in key areas such as technology and investments.

Thank you for your participation in this process. It is key to our success in making SCERS the best it can be.



—Eric Stern

SCERS Begins Strategic Vision Plan Project With Member Survey



SCERS is embarking on a forward-looking Strategic Vision Plan project as it approaches its 100th anniversary in 2041. This plan aims to develop a shared vision among the Board and staff, focusing on long-term challenges and opportunities across financial, demographic, and operational issues for the retirement system.

To help facilitate this year-long effort of mapping out where SCERS is going and how we are going to get there, SCERS has retained a consultant, Mosaic Governance Advisors. The project timeline and framework will incorporate stakeholder feedback from surveys and focus groups from members, employer representatives, SCERS' consultants, staff, and Board members.

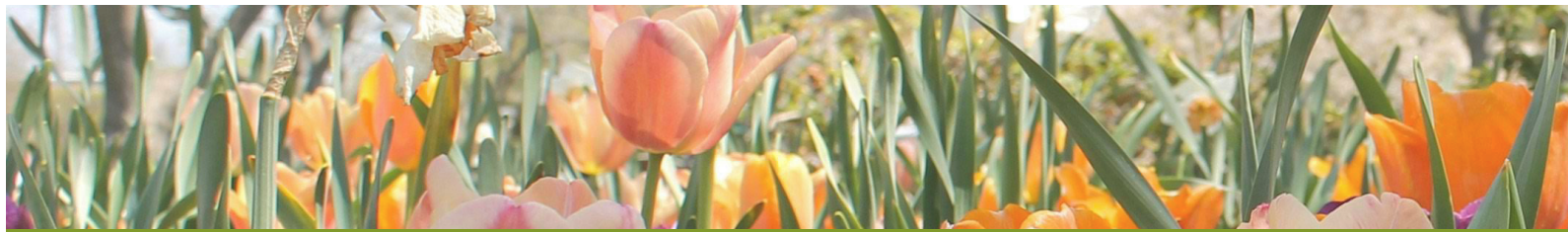
We encourage SCERS members to take a brief, anonymous online survey at www.surveymonkey.com/r/SCERSMembers or by scanning this QR code (using a smartphone camera). The survey closes April 18.

Your opinion of what we are doing well and where we can improve is important to us as we think about how to become even better in the future. These results will help us develop a strategic plan that will guide SCERS in future years. Because SCERS exists to serve its members, your cooperation and feedback is much appreciated. Our future success depends on how well we plan today.

The Strategic Vision Plan will be published on the SCERS website toward the end of the year.



SCAN ME



Employer Spotlight: Department of Agriculture, Weights and Measures

Spring is a busy time of year for Sacramento County's Department of Agriculture, Weights & Measures, a small department of 26 full-time employees, 18-20 seasonal AgAides, and one K-9, working behind the scenes to keep the county safe in many ways. SCERS asked Deputy Agricultural Commissioner Kevin Martyn to tell us more about the important work of this department.

Describe some of what your department is responsible for.

Our pest exclusion and pest detection programs prevent the introduction and spread of invasive pests. Our direct marketing program regulates certified producers, farmers' markets, and organic growers to verify compliance. We inspect all commercial nurseries in the county to ensure cleanliness. Our Pesticide Use Enforcement program ensures that pesticides are being used safely. We assist with apiary registrations and regulation enforcement. To ensure equity in the marketplace, we inspect commercial scales, gas and propane dispensers, and water, electric and vapor sub-meters to confirm accuracy. We also inspect stores to ensure customers receive the advertised price.

Describe how your department is involved with farmers' markets.



For a list of Certified Farmers' Market locations, visit agcomm.saccounty.gov

register Certified Farmers' Markets and perform market inspections to verify producer and operator compliance.

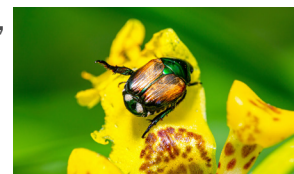
What is the difference between pest exclusion and pest detection?

Pest exclusion is our first line of defense at preventing the introduction of invasive pests and diseases. We inspect agricultural material coming into Sacramento County at parcel facilities such as FedEx, DHL, UPS, USPS, and other high-risk locations to verify that the shipments are pest-free and meet California's requirements for entry.

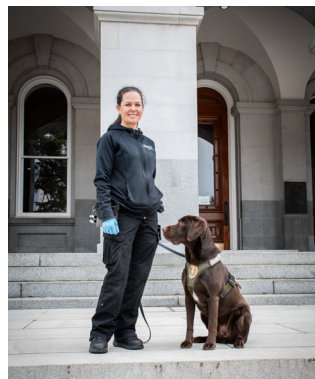
Pest detection is our second line of defense. Insect traps are placed and maintained throughout the county to detect invasive pests. Once detected, we coordinate with the CA Department of Food & Agriculture to place additional traps to prevent the spread and eradicate the pest.

Which insects are doing the most damage, and how did they get here?

Over the last five years, our inspectors have intercepted over 80 invasive pests of known economic importance each year, and three have been of the most concern. Japanese Beetles were first discovered in New Jersey in 1916 and are now a serious pest in over 35 states. They are often introduced into the state from incoming air cargo shipments. The Oriental Fruit Fly is widespread throughout southern Asia and in Africa. It was first found in Hawaii in the mid-1940s. Detections throughout California have increased over the past decade as international passenger air travel has increased. Glassy-winged Sharpshooters were first reported in California in 1994 and now infest 11 Southern and Central counties. They spread primarily from movement of infested plant material.



Japanese Beetles are on the move



Michelle King and Kernul at the state capitol after their Ag Day 2025 detection demonstration

Tell us about your K-9 helper.

Kernul, our highly trained detector dog, works at parcel facilities detecting soil, produce, and pests. Kernul is a chocolate lab owned by the USDA and handled by Sacramento County Sr. Agricultural & Standards Inspector (K-9) Michelle King. Kernul is 9 years old and will be retiring this year and adopted by Ms. King. Unfortunately, due to the reallocation of state funds, our department will not be able to replace Kernul at this time.

What makes your department a great place to work?

Our work is a dynamic blend of agriculture, science, and public service that keeps things interesting and meaningful. Our team is made up of passionate professionals who genuinely care about protecting Sacramento County's agriculture, environment, and consumers. Whether we're stopping invasive pests in their tracks, ensuring farmers markets stay honest, or making sure customers aren't overcharged at the pump, every day brings a new challenge.

We get to work with cutting-edge pest detection techniques, visit farms, inspect nurseries, and even certify agricultural exports heading around the world. Our work directly impacts the food people eat, the plants they grow, and the fairness of everyday transactions.

We're a tight-knit, supportive team. Job stability, a pension, and the satisfaction of making a difference is hard to beat. It's reassuring to know that after a rewarding career with the county, staff can have financial stability in retirement.



Annual Statements Now Available via Member Portal

Annual Statements for active and deferred members are now available through the SCERS member portal. This is the final year SCERS is sending Annual Statements via postal mail.

The MySCERS member portal offers a convenient way for SCERS members to access their accounts online 24/7.

To register, go to my.scers.gov and click “Need to register?”. Alternatively, you can access MySCERS by selecting the MySCERS Log In button on the www.scers.gov website.

Follow the onscreen prompts. Once you receive your authorization code in the mail, follow the instructions given to activate your account.

Don’t Miss Emails From SCERS

When registering for the SCERS member portal, members must provide an email address, which for retirees may be an address we previously did not have on file. Past versions of our retirement application did not include a field for entering a non-county email address, so many members retired leaving SCERS without a way for us to quickly communicate to them important updates and information.



Members who register for the portal may receive occasional email updates from SCERS. These messages will come from “SCERS Communications (noreply@scers.gov),” which can’t be replied to directly but will include our main email address in the message footer. Recipients of our communications may opt out but could miss important information from SCERS.

The first time you receive an email from “SCERS Communications,” it may land in junk mail or spam folders. Please add the SCERS Communications email to your address book so future messages will be delivered to your inbox. You may have to download the images in our messages in order to view them the first time you receive an email from SCERS. We look forward to keeping all of our members informed.

Investment Update

Halfway through the fiscal year, SCERS’ investment portfolio has returned 3.7% net of investment management fees and is on track to meet its annual target of 6.75% by June 30, 2025.

The returns are being led by SCERS’ Growth assets across equities and credit.

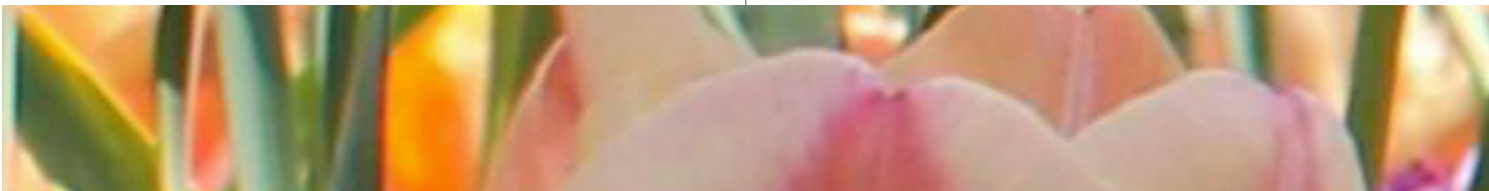
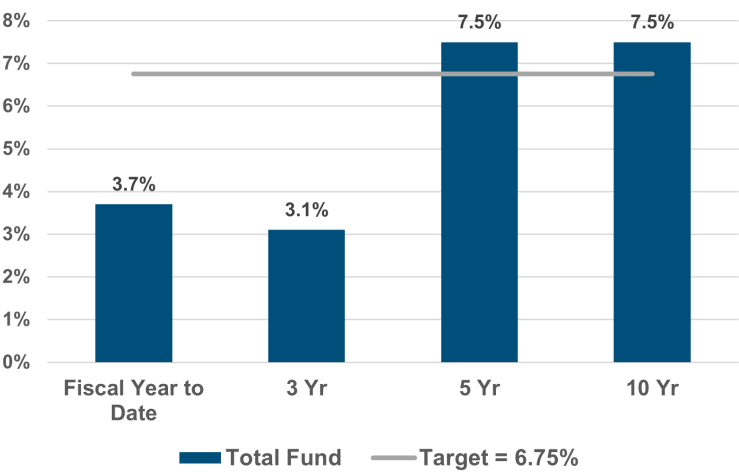
Diversifying assets, which are designed to protect assets in market downturns, are generating more muted but positive returns in an environment of interest rate volatility. Real Return assets are also positive, led by infrastructure and energy exposure, while real estate returns have lagged.

The start of calendar year 2025 has been much more volatile, with a selloff in U.S. equities toward correction territory.

The downturn is fueled by uncertainty being priced into the markets because of tariffs and the potential for a trade war, and concerns over potential stagflation (persistent inflation combined with potentially moderating economic growth).

“While the market volatility could put pressure on SCERS’ portfolio to fall short of the 6.75% actuarial rate by the end of fiscal year 2025, SCERS’ investment portfolio is structured with diversification across many asset classes and market segments to better weather market volatility,” said SCERS’ Chief Investment Officer Steve Davis.

SCERS' Total Plan Returns (as of Dec. 31, 2024)





Sacramento County
Employees' Retirement System
980 9th Street, Suite 1900
Sacramento, CA 95814

PRESORTED
STANDARD MAIL
U.S. POSTAGE

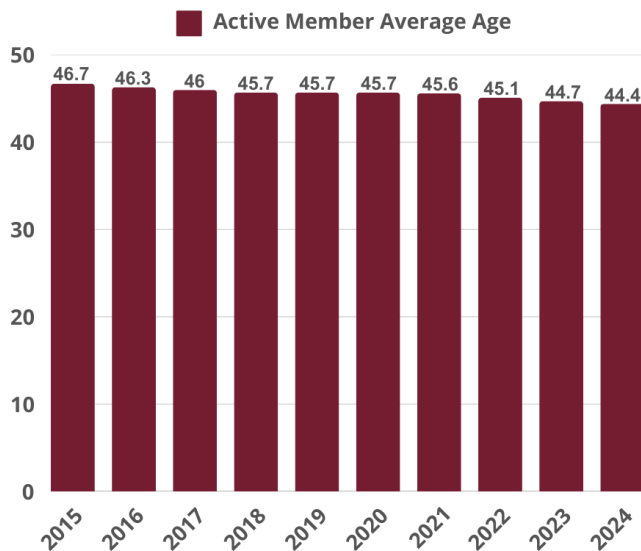
PAID

SACRAMENTO, CA
PERMIT #24

Workforce Turnover Since 2015

SCERS Active Members Trending Younger

As older members of the workforce retire, the average age of active members is steadily decreasing. A new generational shift is emerging in the workforce, but our commitment to be there for them when they're ready to retire will never change.



Upcoming Events

Board Meetings - 10:00 a.m.

- Wednesday, April 16
- Wednesday, May 21
- Wednesday, June 18

Board meetings are presented as in-person events, with live-streamed meeting links accessible from our home page quick link menu.

Visit scers.gov/retirement-board-meetings for agendas, minutes, and other Board updates.

Retirement Planning Webinars - 10:00 a.m.

- Thursday, May 29 (Court employees)
- Thursday, June 26

Retirement Planning Webinars are for members who plan to retire within a few years. SCERS will be joined by representatives from some or all of the following agencies: Social Security Administration, Fidelity Investments, Sacramento County Retired Employees Association, and Sacramento County's Employee Benefits Office. Register at scers.gov/retirement-planning-webinars.